

# Sensor node/mote Connect2Server

## Πίνακας περιεχομένων

1. Create a mote with Raspberry Pi .....	1
1.1. Install Raspberry Pi .....	2
1.1.1. Step 1: Download Raspbian .....	2
1.1.2. Step 2: Unzip the file .....	3
1.1.3. Step 3: Write the disc image to your microSD card .....	3
1.1.4. Step 4: Enabling SSH .....	3
1.1.5. Step 5: Put the microSD card in your Pi and boot up .....	4
1.1.6. Step 6: Access via SSH .....	4
1.1.7. Step 7: Configure your Raspberry Pi .....	4
1.2. Arduino Uno Raspberry Pi Serial Communication .....	5
1.2.1. Serial config on Raspi .....	5
1.2.2. Reading in arduino .....	6
1.2.3. Python .....	6
1.2.4. PHP .....	6
1.2.5. NodeJS .....	7
1.3. Send data2server .....	8
1.3.1. NodeJS .....	8

## 1. Create a mote with Raspberry Pi

The Raspberry Pi is a low-cost credit-card sized single-board computer. The Raspberry Pi was created in the UK by the Raspberry Pi Foundation. The Raspberry Pi Foundation's goal is to "advance the education of adults and children, particularly in the field of computers, computer science and related subjects."

[Wikipedia](#)

*Raspberry Pi 2 Model B*

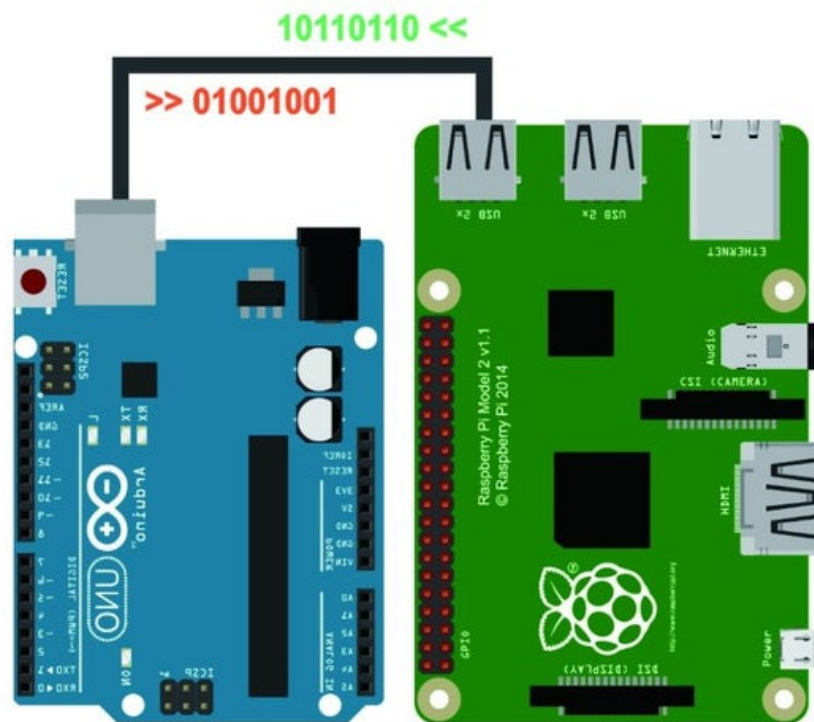


*Remember*

A mote is a node but a node is not always a mote!

## RaspPi-Arduino Serial Communication

01001000 01110101 00011101 11100010 10101011 01010100



## 1.1. Install Raspberry Pi

### 1.1.1. Step 1: Download Raspbian

[Download](#) the Raspbian disc image - Choose Raspbian Lite

*Why Raspbian Lite?*

Because it is a lightweight version of the Raspbian and it doesn't have a graphical user interface installed.



This means that it doesn't have any unnecessary software installed that we don't need for our projects, so this makes it the perfect solution for future automation projects.

### 1.1.2. Step 2: Unzip the file

- Windows users, you'll want 7-Zip.
- Linux users will use the appropriately named Unzip.

### 1.1.3. Step 3: Write the disc image to your microSD card

Next, pop your microSD card into your computer and write the disc image to it. You'll need a specific program to do this:

- Windows users, your answer is [Win32 Disk Imager](#).
- Linux people, [Etcher – which also works on Windows](#) – is what the [Raspberry Pi Foundation recommends](#).

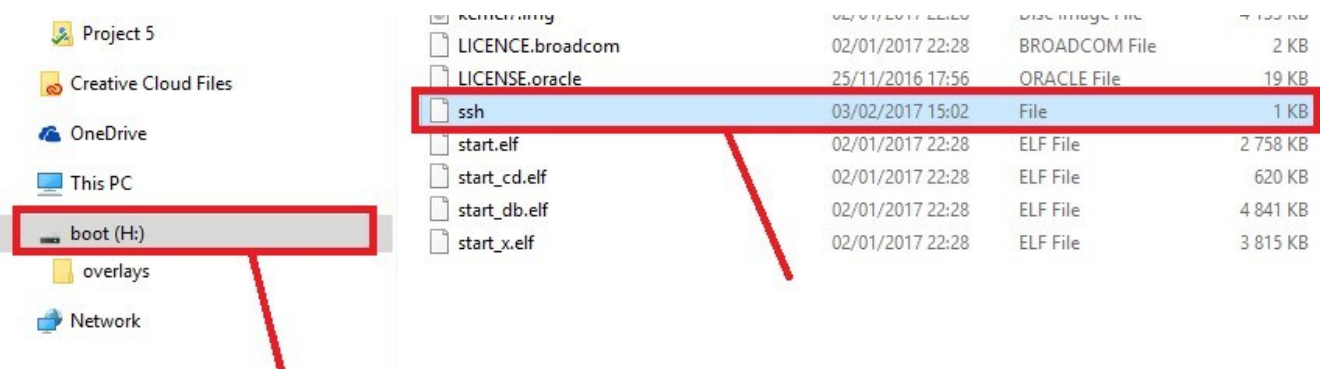
The process of actually writing the image will be slightly different across these programs, but it's pretty self-explanatory no matter what you're using.

- Each of these programs will have you select the destination (make sure you've picked your microSD card!) and the disc image (the unzipped Raspbian file).
- Choose, double-check, and then hit the button to write.

### 1.1.4. Step 4: Enabling SSH

- Windows users

Create ssh file (no extension)



- Linux Users

Create ssh file

```
sudo fdisk -l
# find dev and Boot partition
sudo mkdir /mnt/sdcardP1
sudo mount /dev/device_partition_boot /mnt/sdcardP1 -rw
cd /mnt/sdcardP1
sudo touch ssh
```

### 1.1.5. Step 5: Put the microSD card in your Pi and boot up

Your default credentials are username **pi** and password **raspberrypi**

### 1.1.6. Step 6: Access via SSH

- The boot protocol for the ethernet interface is set to DHCP by default

You can find the open SSH ports on your network using the nmap utility:

*find ports on Network*

```
nmap -p 22 --open -sV 192.168.1.0/24
```

You should find your pi listed in the output along with the IP assigned to the pi.

- You can change the boot protocol to static and define a static IP address for the pi by editing the ifcfg-eth0 file:

*static IP address*

```
sudo fdisk -l
# find dev and Boot partition
sudo mkdir /mnt/sdcardP1
sudo mount /dev/device_partition_ext /mnt/sdcardP1 -rw
cd /mnt/sdcardP1
vi /etc/sysconfig/network-scripts/ifcfg-eth0
```

Then edit the file to suit your needs

*static IP address*

```
DEVICE=eth0
BOOTPROTO=static
ONBOOT=yes
NETWORK=192.168.1.0
NETMASK=255.255.255.0
IPADDR=192.168.1.200
GATEWAY=192.168.1.1
```

### 1.1.7. Step 7: Configure your Raspberry Pi.

**raspi-config** is the Raspberry Pi configuration tool

*config Pi*

```
sudo raspi-config
```

It has the following options available:

```
(raspi-config) |-----| Raspberry Pi Software Configuration Tool
|
| 1 Change User Password Change password for the current user
| 2 Network Options      Configure network settings
| 3 Boot Options        Configure options for start-up
| 4 Localisation Options Set up language and regional settings to match your
| location              |
| 5 Interfacing Options Configure connections to peripherals
| 6 Overclock           Configure overclocking for your Pi
| 7 Advanced Options    Configure advanced settings
| 8 Update              Update this tool to the latest version
| 9 About raspi-config  Information about this configuration tool
|
|                                     <Select>                                     <Finish>
|-----|
|-----|
```

## 1.2. Arduino Uno Raspberry Pi Serial Communication

### 1.2.1. Serial config on Raspi

*config 1 (recommended)*

```
whoami
sudo usermod -a -G dialout pi
reboot
```

This gives read/write permission for all users to the Raspberry Pi (potentially unsafe):

## config 2

```
sudo chmod 777 /dev/ttyACM0
```

This provides some configuration for the Arduino serial connection:

### *configuration for the Arduino serial connection*

```
sudo stty -F /dev/ttyACM0 cs8 9600 ignbrk -brkint -icrnl -imaxbel -opost -onlcr -isig  
-icanon -iexten -echo -echoe -echok -echoctl -echoke noflsh -ixon -crtcts
```

## 1.2.2. Reading in arduino

### *C code in the arduino*

```
void loop() {  
    meas = analogRead(a);  
    if (Serial.available())  
    {  
        if (Serial.read() == '1')  
        {  
            Serial.println(meas);  
        }  
    }  
}
```

## 1.2.3. Python

### *Python code in Raspberry Pi*

```
import serial  
from datetime import datetime  
from time import sleep  
now = datetime.now()  
  
ser = serial.Serial('/dev/ttyACM0', 9600)  
ser.write("1".encode())  
sleep(0.05);  
s = ser.readline()  
  
file = open("dataset", "a")  
file.write(now.strftime("%Y-%m-%d %H:%M") + " Sensor Value:" + str(s)+ "\n")  
file.close()
```

## 1.2.4. PHP



### PHP code in Raspberry Pi - read

```
<?php

include "php_serial.class.php";

$serial = new phpSerial();
$serial->deviceSet("/dev/ttyACM0");
$serial->confBaudRate(9600);
$serial->confParity("none");
$serial->confCharacterLength(8);
$serial->confStopBits(1);
$serial->confFlowControl("none");

$serial->deviceOpen();
$read = $serial->readPort();
$serial->deviceClose();

echo $read
```

Sends a string to the Arduino.

### PHP code in Raspberry Pi - send

```
<?php

error_reporting(E_ALL);
ini_set('display_errors', '1');
include "php_serial.class.php";

$serial = new phpSerial;
$serial->deviceSet("/dev/ttyAMA0");
$serial->confBaudRate(115200);
$serial->confParity("none");
$serial->confCharacterLength(8);
$serial->confStopBits(1);
$serial->deviceOpen();
$serial->sendMessage("Hello from my PHP script, say hi back!");

$serial->deviceClose();

echo "I've sended a message! \n\r";
```

## 1.2.5. NodeJS

Read the writing carefully on your Raspberry Pi circuit board to confirm it indicates something like “Raspberry Pi 4 Model B” or “Raspberry Pi 2 Model B”. If in doubt, run the following command in the terminal:



```
$ uname -m
```

If the result returned starts with “**armv6**”, you are running a Raspberry Pi based on the older ARMv6 chipset and the next Node.js installation step **will not work**; otherwise, you are ready for the next step.

### *Install NodeJS*

```
curl -sL https://deb.nodesource.com/setup_13.x | sudo -E bash -
sudo apt install -y nodejs
npm install raspi-serial
```

### *Install NodeJS - armv6*

```
cd ~
wget http://nodejs.org/dist/v6.2.1/node-v6.2.1-linux-armv6l.tar.gz
tar -xzf node-v6.2.1-linux-armv6l.tar.gz
cd node-v6.2.1-linux-armv6l/
sudo cp -R * /usr/local/
export PATH=$PATH:/usr/local/bin
npm install raspi-serial
```

### *NodeJS code in Raspberry Pi - read*

```
import { init } from 'raspi';
import { Serial } from 'raspi-serial';

init(() => {
  var serial = new Serial();
  serial.open(() => {
    serial.on('data', (data) => {
      process.stdout.write(data);
    });
    serial.write('Hello from raspi-serial');
  });
});
```

## **1.3. Send data2server**

### **1.3.1. NodeJS**



```
...
var serverIOT=IP_SERVER
const socket = require('socket.io-client')('https://'+serverIOT+':9080');
socket.on('connect', function () {
  socket.emit('subscribe', log);
  var obj = new Object();
  obj.room = log;
  obj.message = data;
  var text = JSON.stringify(obj);
  var text1 = Buffer.from(text);
  var text5 = text1.toString('base64');
  socket.emit('log', text5, log )
  //console.log(util.inspect(text5, false, null, true /* enable colors */)

  res.json({
    'message':"ok"
  });
});
...

```



You can find more information [here](#) and [here](#)